

# COFFEE & CONVERSATION



## SWAN IMPACT NETWORK

**AUGUST 11 | 8:30 – 9:30AM | ZOOM WEBINAR**

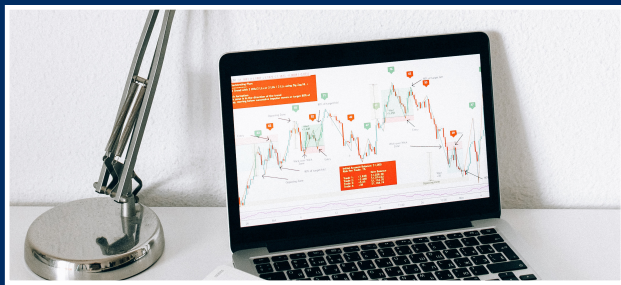
Elizabeth Jennings will share how 2020 has reshaped thinking around early stage investing--and how innovative businesses can use this to their advantage. Especially pertinent to healthcare and cleantech, we'll walk through techniques for developing a resilient commercial narrative and strategy to move forward conversations with both investors and partners alike amid the relative uncertainty of 2021. You'll learn how to reframe your go-to-market strategy to align with fund theses and strategies, tactics for getting useful feedback from key players, and early steps you can take to improve your leverage.



### **ELIZABETH JENNINGS** Board of Directors SWAN Impact Network

Elizabeth aims to maximize the impact of for-good startups. She speaks frequently on investment and innovation within regulated industries, serves as an advisor to several medical device, in-vitro diagnostics, and AI startups.

Elizabeth also supports a number of organizations addressing critical international development and neglected tropical disease issues.



**REGISTER AT:** [ucmsbdc.ecenterdirect.com/events/14143](https://ucmsbdc.ecenterdirect.com/events/14143)



Funded in part through a Cooperative Agreement with The U.S. Small Business Administration.

Funded in part through a Grant with the Governor's Office of Business and Economic Development. All opinions, conclusions, and/or recommendations expressed herein are those of the author(s) and do not necessarily reflect the view of the Governor's Office of Business and Economic Development.